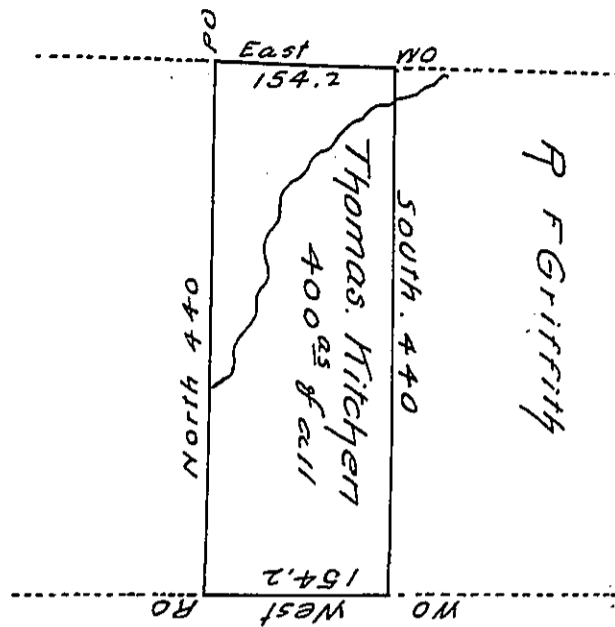


Thomas Childs



Wm Childs

Situated in Beech Creek Township Clinton County. Surveyed
 the 13 day of Dec. 1858 to Thomas Kitchen. By virtue
 of his Warrant for 383^{acs}. Bearing date the 8. day of
 Dec. 1858. Containing 400^{acs} and allowance of Six per
 cent for Roads &c.

Wm P Baird Co. Sur.

To John Howe Esq.
 Sur. Gen. of Penna.

IN TESTIMONY that the above is a copy of the original remaining on file in
 the Department of Internal Affairs of Pennsylvania, made
 conformably to an Act of Assembly approved the 16th day of
 February, 1833, I have hereunto set my Hand and caused
 the Seal of said Department to be affixed at Harrisburg,
 this tenth day of August 1905

George D. Brown
 Secretary of Internal Affairs.